

CERTIFIED LAND CORNER RECORDATION

DESCRIPTION OF CORNER EVIDENCE FOUND, AND ORIGINAL RECORD (If known)

LOCATION $\frac{1}{4}$ S.10 S.11 T.12N., R.63W. 6th P.M.

Found a 1" dia. x 36" long (concrete-filled) iron pipe with brass cap (General Land Office monument). Monument found bent with cap marred, lower portion of monument plumb and in place. Corner falls in cultivated field.

G.L.O. Record - 1" dia. x 36" long iron pipe with brass cap; Edwin H. Van Antwerp, 1911.

DESCRIPTION OF MONUMENT AND ACCESSORIES ESTABLISHED TO PERPETUATE THE ORIGINAL LOCATION OF THIS CORNER:

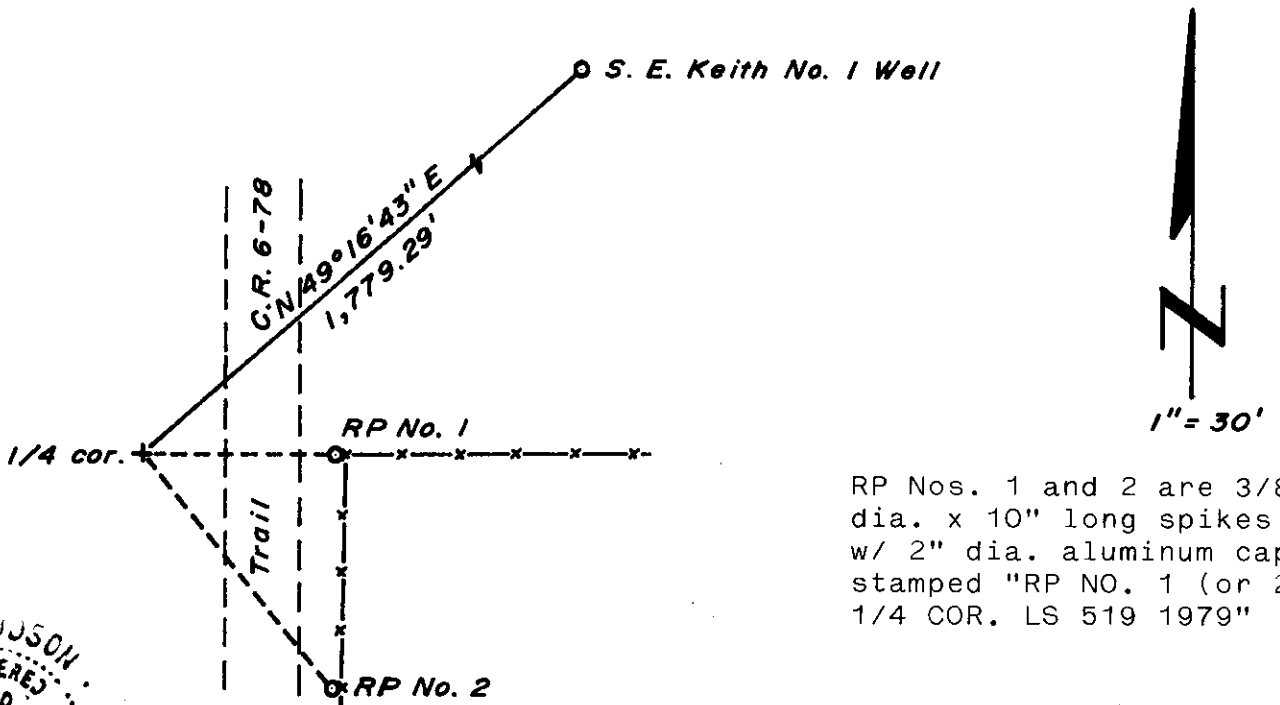
At the corner: Monument was removed; no replacement monument set since corner falls in cultivated field.

Accessories: The center of the pump motor of the S. E. Keith No. 1 Well bears N 49° 16' 43" E, 1,779.29 feet distant.
 RP No. 1 bears S 89° 02' E, 29.71 feet distant.
 RP No. 2 bears S 38° 33' E, 46.82 feet distant.

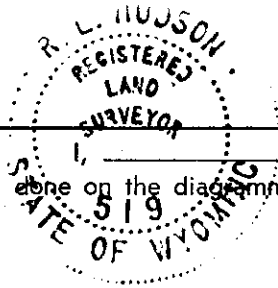
SKETCH, WITH COURSE AND DISTANCE TO ADJACENT CORNER IF DETERMINED IN THIS SURVEY.
 (May Sketch or Paste Reproduction on Reverse Side.)

Basis of Bearing - By solar observation at the S. E. Keith No. 1 Well.

Distances based on measurements by electronic means.



RP Nos. 1 and 2 are 3/8" dia. x 10" long spikes w/ 2" dia. aluminum caps stamped "RP NO. 1 (or 2) 1/4 COR. LS 519 1979"



R.L. Hudson certify that I have carefully performed or reviewed the work done on the diagrammed corner as reported on this recordation form and approve the same.

R.L. Hudson Wyoming L.S. No. 519
 Signature of Surveyor Registration No.

STATE OF WYOMING,
 Office of Clerk and Recorder,
 County of Saramie

558991

This "corner record" was filed for record on the DEC 13 1979 day of 1979, was noted on the cross-index plat and is assigned page No. _____, in book No. _____.

Janet C. Whithead County Official

Cross Index No.	T. _____	R. _____	Mer.
	<u>G-17</u>	<u>12</u>	<u>63</u>
	_____	_____	Mer.
	_____	_____	Mer.
	_____	_____	Mer.
	_____	_____	Mer.
	_____	_____	Mer.

558991

Photographed.....

Indexed.....

Posted.....

Assessor.....